

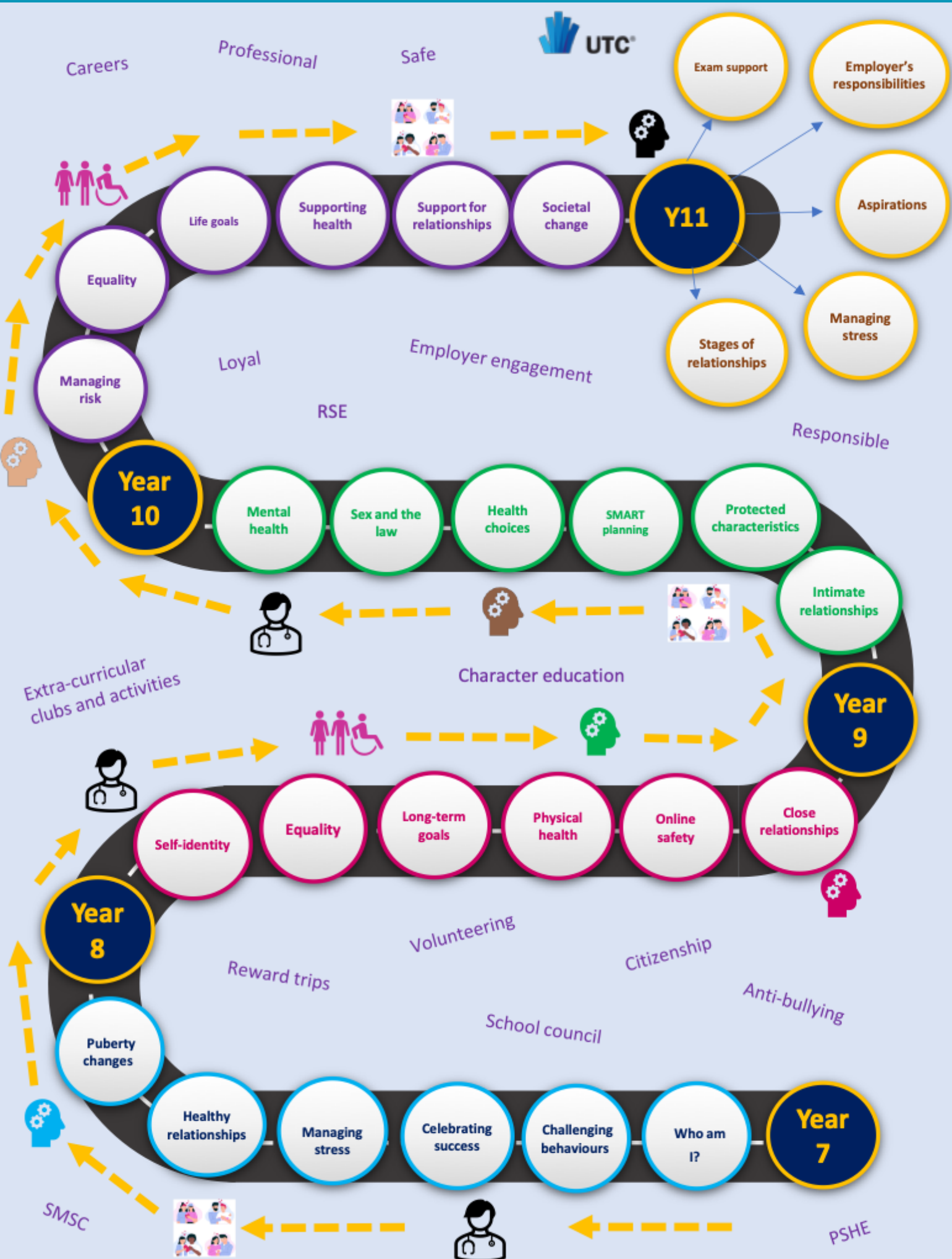
PERSONAL DEVELOPMENT CURRICULUM

Our inclusive curriculum celebrates diversity and promotes tolerance and mutual respect of others. At UCS we carefully map how our curriculum provision supports our students' personal growth and promotes fundamental British Values; social, moral, spiritual and cultural awareness; personal, social and health education; and relationship and sex education.

All students receive a Personal Development lesson as part of their weekly timetable. Using the JIGSAW programme as a foundation, the curriculum has been developed to reflect and support the personalised needs of UCS students. This means both a proactive curriculum, but, when necessary, a supportive curriculum that reflects current affairs and local issues. Every lesson is sub-divided into one of four distinct categories:

1. PSHE (Personal, Social and Health Education)
2. RSE (Relationships and Sex Education)
3. Citizenship
4. Careers

Personal Development



Professional



Responsible



Loyal



UNIVERSITY COLLEGIATE SCHOOL



A MEMBER OF QUEST